



Dear Customer,

We would like to take this opportunity to welcome you and thank you for looking to ASA PCB as your Printed Circuit Design Partner and to provide your company with total concept solution for your product development projects. ASA PCB has been supporting engineers for the Fortune 500 to 1000 and start up companies from concept to design and manufacturing of printed circuit boards since 1993.

We are conveniently located in the Silicon Valley, California. Our engineering team and our founders are well respected and are highly skilled with over 25 years of industry experience servicing clients from the Silicon Valley and across the US to over seas companies. Our goals are to bring best in the breed quality and technologies to our customer-partner. We work closely and assist our client's need from concept to product and on time delivery.

Some of our customer - partner are Xilinx, Broadcom, Samsung, Maxim, Linear Technology, Intel, Applied Materials, Juniper Networks, Broadcom, National Semiconductor, Altera, Conexant, Cisco, Sun Micro Systems, HP, Lockheed Martin, Ericson, NASA and more...

We look forward to providing solution to your PCB Design requirement projects. Thank you for your support!



FOR MORE INFORMATION, PLEASE CONTACT:

Tony Nguyen – PDV Manager
Tel: 408.829.7085 Email: TonyN@asapcb.com

Bus: 3561 Homestead Rd., Suite #282 Santa Clara, CA 95051

Website: www.asapcb.com

NPI SUPPORT - DESIGN

PCB DESIGN

MECHANICAL DESIGN

SCHEMATIC CREATION

COMPONENT SELECTION

COMPONENT LIBRARY CREATION

B.O.M CREATION (BILLING MATERIALS)

NETLIST CREATION

DOCUMENTATIONS

DESIGN REVIEW

TESTING

BOARD LEVEL DESIGN SUPPORT

PROGRAM MANAGEMENT

PCB DESIGN TOOLS

CADENCE ALLEGRO

MENTOR GRAPHICS

MENTOR PADS EXPIDITION

ORCAD

ALTIVUM

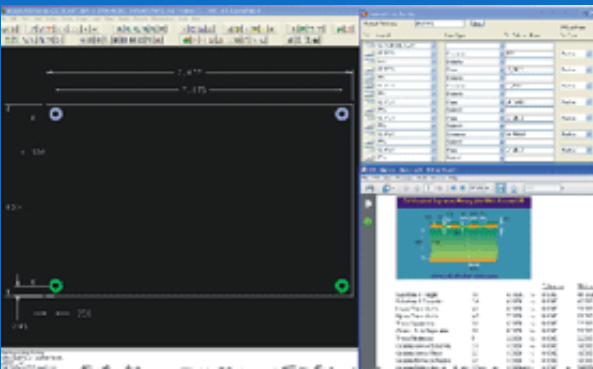
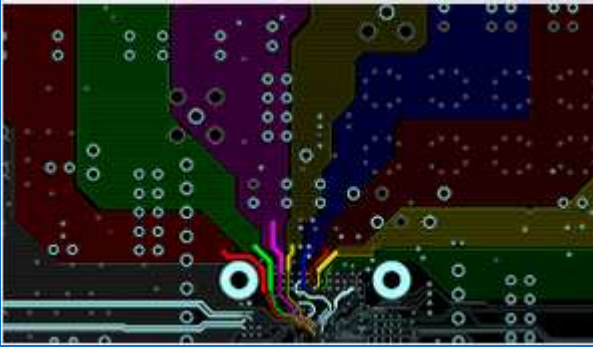
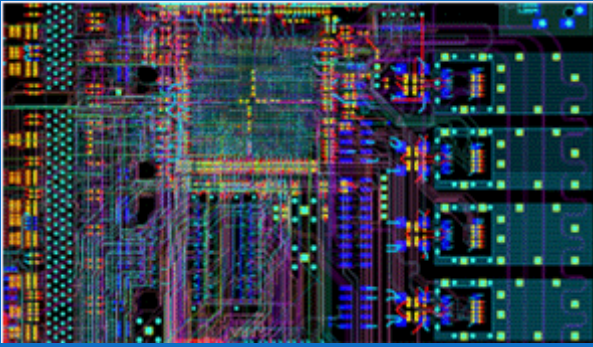
PROTEL, PCAD

EDA TOOLS

SOLID WORKS

AUTOCAD

PADS POWER PCB



PCB DESIGN REQUIREMENTS

- Schematic database (preferred), soft copy schematic, or a CAD generated NETLIST.
- Board Dimension outline (mechanical drawings with outline), with connector locations, placement and routing keep out areas, mounting holes and any other requirement information.
- Net-list
- B.O.M. (Bill of materials) with reference designator.
- All Data sheets with footprint dimensions and references for Pin 1 and Pin 2 (MFR. Part numbers is helpful).
- Circuit Technology: high speed, digital, RF, Analog, optical, Etc.
- Number of sides of SMT components required.
- Critical Routing Requirements: Clock Routing, Matched Lengths, Differential Pairs, Guard Traces, Split Planes, Etc.
- Termination Scheme and requirements.
- ICT Test Point Requirements.
- List of critical net names and routing guidelines with termination schemes.
- We except AutoCad database.
- Turn around time required.

DELIVERABLE AND OPTIONS

- Complete Gerber File Database.
- Assembly drawings including X and Y coordinate file.
- Complete fabrication drawing including board dimension, fabrication notes, holes chart, stack-up, creation, holes chart, parts library, foot print creation and verification.

MANUFACTURING REQUIREMENTS

- Design for manufacturability & design for testability
- Net topology optimization.
- PCB layout guideline creation.
- Constraint management (High –speed board design, signal integrity).

PDV Manager: **Tony Nguyen**

Tel: (408) 829-7085 . TonyN@asapcb.com

Website: www.asapcb.com